



Woodhall Community Centre Partnership Proposal

SJÖG
Hospitaller Services



Produced by colleagues at
Woodhall Community Centre

Contents

1. Who we are
2. Our history
3. Woodhall Day Opportunities
4. Woodhall Community Activities
5. Challenges
6. What it costs to run Woodhall
7. Partner with us



Who we are





At Saint John of God Hospitaller Services, UK, **our purpose is to meet need where we find it.**

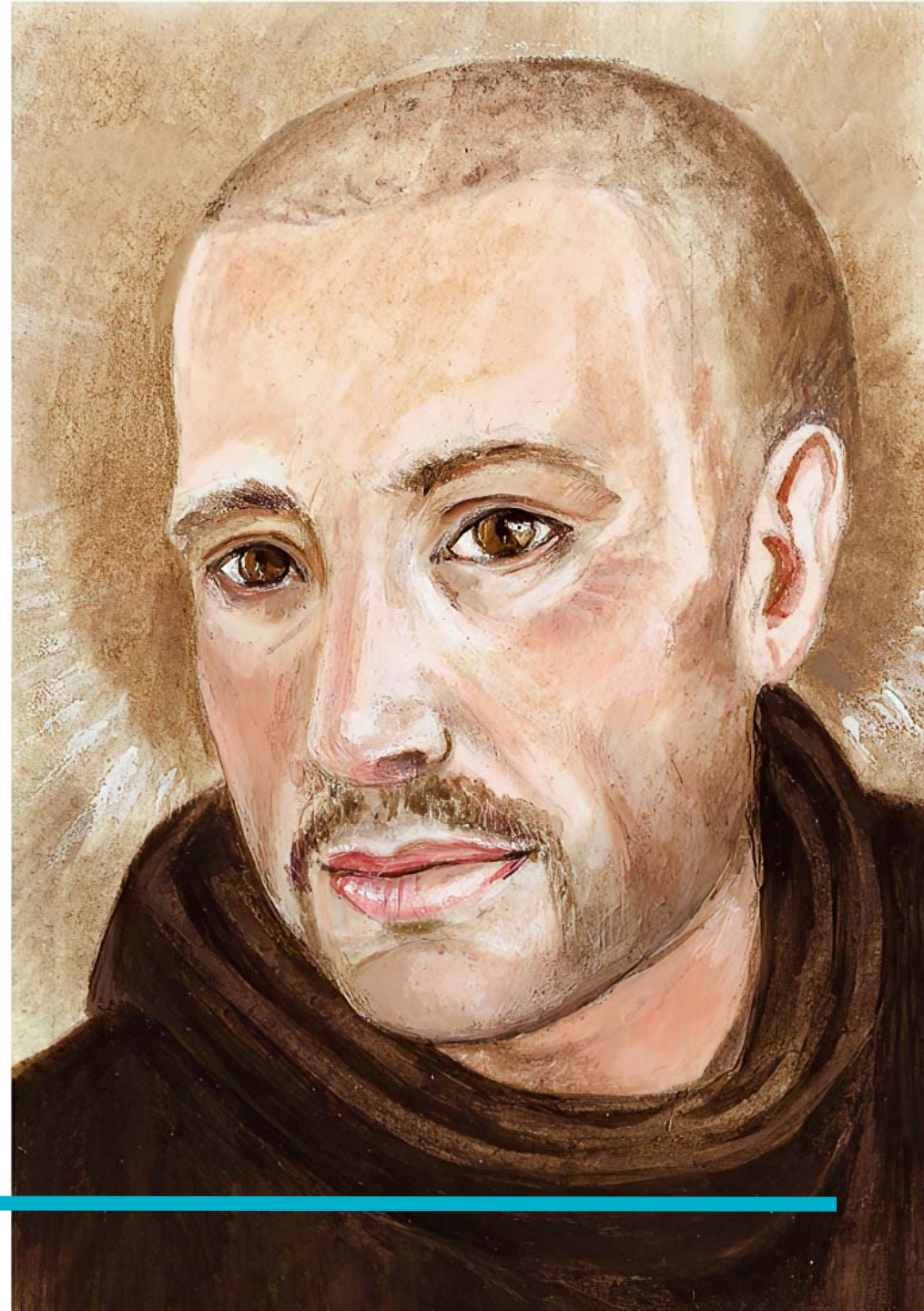
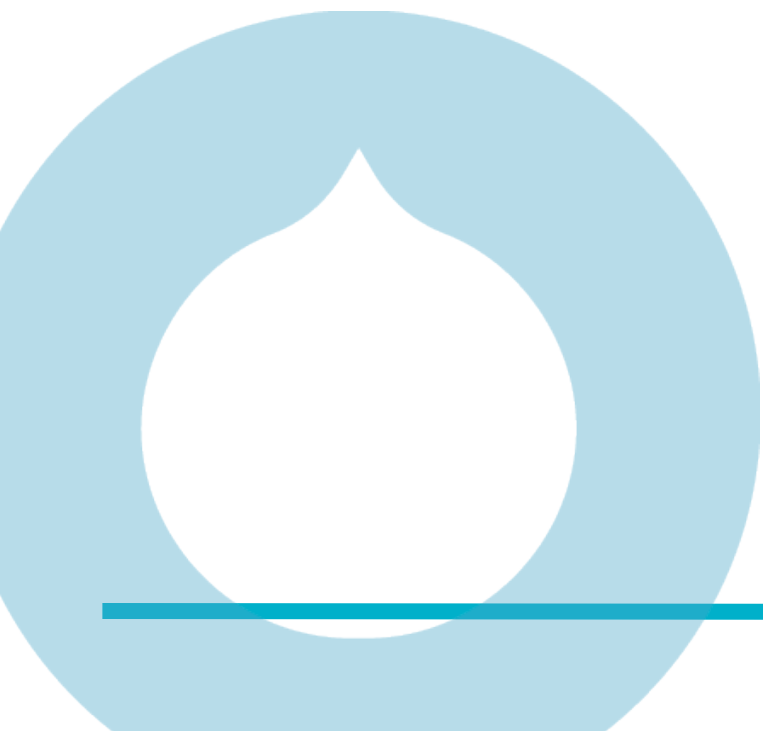
We believe in the potential of people. That every person has intrinsic value and inherent dignity. We believe that with the right support every person can achieve their potential. **Every day, we say, "come in, you are very welcome"** and every day we are inspired by the strength, humanity, and hospitality of the people that we work alongside.

In the UK we approach that through delivering services to meet the needs of people with learning disabilities, autism and complex needs, people who experience homelessness, people subject to modern day slavery and trafficking, older religious communities, and those displaced by war.

At SJOG Hospitaller Services, UK, we are part of a family of SJOG charities from the UK, Ireland and Malawi that support people most in need.

Woodhall Community Centre is a very special service and 'one of a kind' in the plethora of SJOG services. Woodhall Community Centre was established in 1938 and continues to serve the local community in a variety of ways including offering organised activities, room hire for private events and a day service for adults with learning difficulties with services based on the Day Opportunities Framework of Hertfordshire County Council.

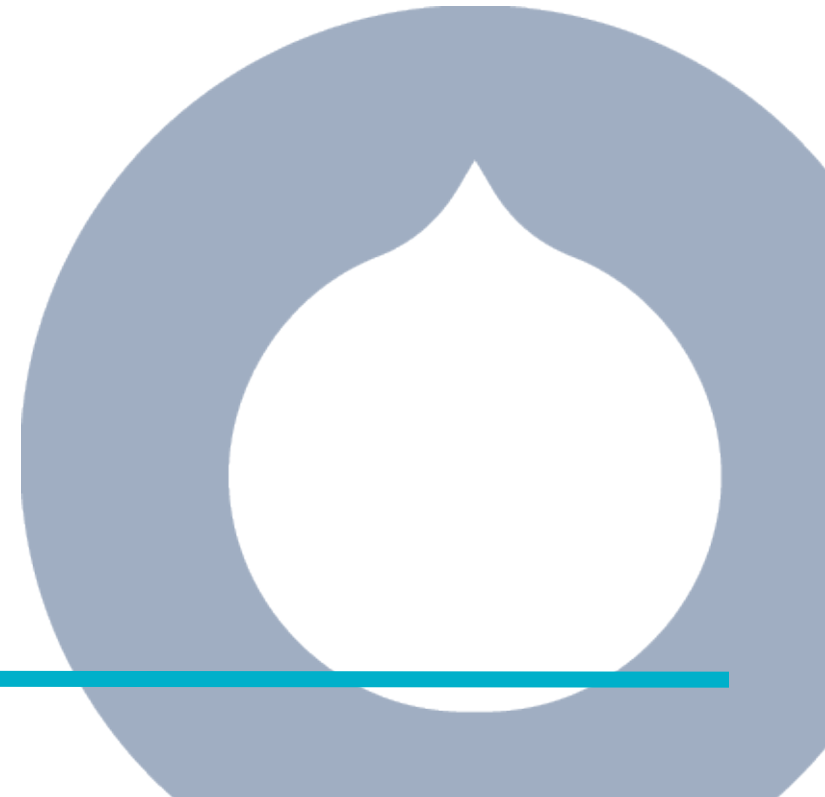
Our history





Our work began more than 500 years ago with **our founder Saint John of God** who, having had personal experience of receiving care, spoke up for the poor and founded a hospital in Granada in Spain.

His mission inspired work in **52 countries including Australia, Venezuela, Malawi, Korea, Spain, Bolivia, Canada, Spain, Ireland, and the UK**. Whilst we exist as separate organisations, our 60,000 co-workers (who support 1 million people every day) are inspired by the pioneering work of our founder.





Woodhall Community Centre is located in the Peartree district of Welwyn Garden City and has been an accessible resource for the local community for almost 85 years, since 1938.

SJOG has been running Woodhall Community Centre for 25 of those years and our aim is to provide a welcoming environment where community groups can meet and where we can provide opportunities for people with additional support needs.



Woodhall Community Centre is a vibrant centre for the community, and a flagship service for people with disabilities.



Woodhall
Community Centre

SJOG
Hospitaller Services

Services for adults • Community activities
Rooms for hire • Garden café

Tel: 01707 802829

www.w

og.ul

The National
Learning Disabilities
& Autism Awards
2023



The Day Opportunities Day Service (for people with learning disabilities and autism)

We work creatively to provide help, support and opportunities to meet people's needs, wishes and aspirations through work-based and therapeutic activities and by delivering personalised support.

Each person who accesses the service is supported and encouraged to develop skills, with sessions being outcome-focused and regular reviews taking place to ensure continuous development and quality of service. We co-produce pathways to success with the people who access our service ensuring that person-centered outcomes are achieved.

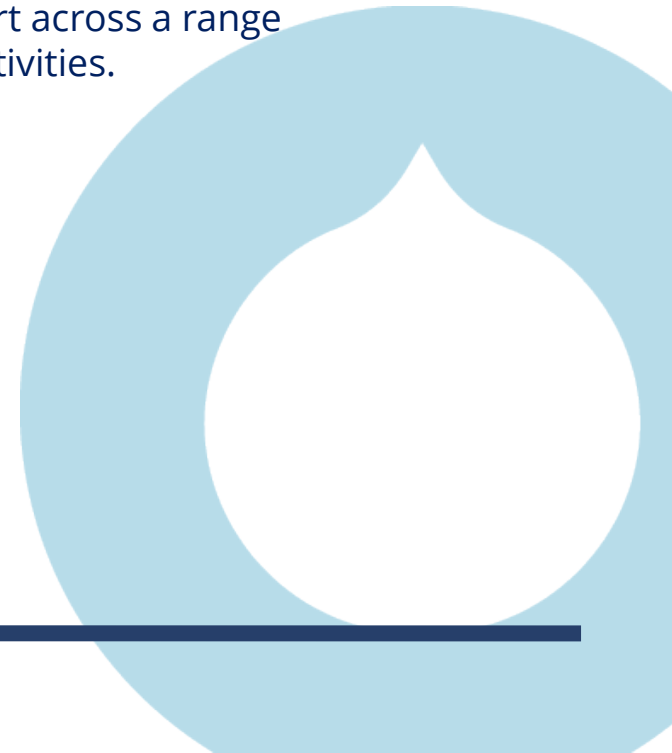




Sessions include:

- Horticulture
- Life skills
- Cooking
- Music and movement
- Sport and well-being

The programme has been specifically designed to promote confidence, independence, and aspirations for those most vulnerable in our community by providing training, learning and support across a range of community and social enterprise activities.



Community Activities

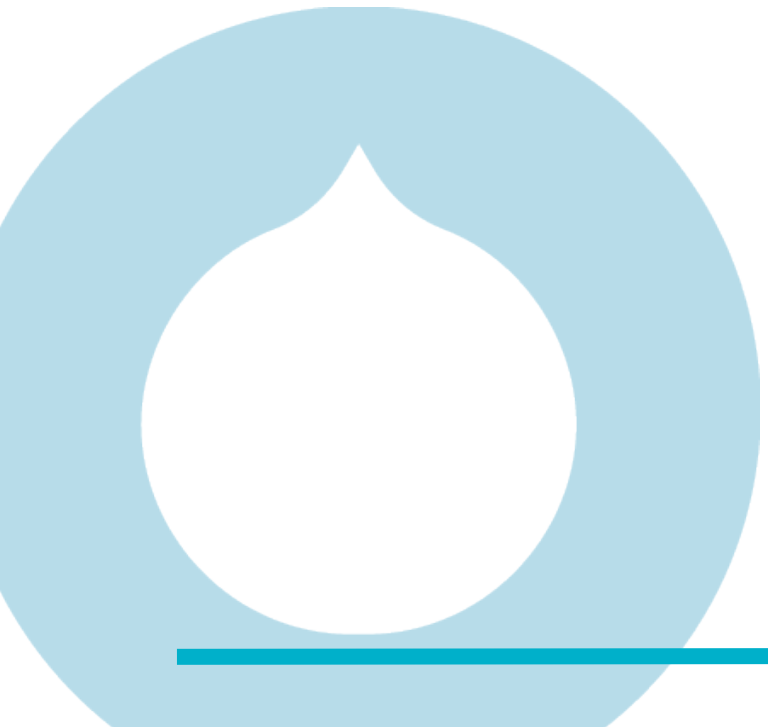
Woodhall is a vibrant community centre with spaces rented out to community groups from 3pm onwards and all day on weekends.

Woodhall Community Centre has a large hall, smaller activity/craft room, kitchen, café area and sensory room).

There are a mixture of activities for all ages, some via private hire for example Yoga, carpet bowls and Boxercise, and some that we run in-house, for example Girls Football and Peartree Pirates (our health, nutrition and sports club for 9-16 year olds).



Challenges



Although Woodhall Community Centre is a well-established building, it was significantly impacted during Covid lockdowns. The Centre was closed for the duration of lockdowns and faced a standing start to re-open and regrow services. Re-opening commenced in April 2021, however, re-opening was slow as many people we support were shielding for a considerably longer period than the 'official' end of lockdown.

Day service numbers have grown from 14 in October 2021 to 38 in April 2023, more than doubling in growth in 18 months.

To make the service sustainable we need to grow, so in 2023 have added more activities such as IT and community events and will be opening our doors for more people with learning disabilities and autism to access on a daily basis.

We also want more people to benefit from the centre, hence the development of our youth programme 'Peartee Pirates' and our latest addition of Girls Football.

As with many community organisations, funding remains our biggest challenge!



We believe that with the right support every person can achieve their potential.

SJOG believes that every person has intrinsic worth and inherent dignity, and that with the right support each and every person can achieve their potential.

We don't have one standard approach but creatively provide help and support to people in the way they want.

We continue to be inspired by the story of our founder, Saint John of God, who left us a legacy of providing value-based service to those most in need.

Our Values

These are the values that we uphold in all that we do to make sure we treat people with:

HOSPITALITY

COMPASSION

RESPECT

SERVICE OVERVIEW

Woodhall Community Centre

- Learning and well-being environment for adults with additional support needs
- Large hall – available to hire
- Smaller room for multi-use
- Kitchen
- Café

Coming in 2022
– indoor and outdoor sensory areas



Referrals

Finding the right support doesn't have to be complicated. At SJOG we can offer advice about accessing the service.

We will ensure a robust assessment is undertaken prior to agreeing a placement and will develop a person-led plan to enable you to maximise the benefits from the services.

Referrals can be made:

- via the person's social services adult care team or other local authority service.
- by self-referring directly to the centre or by a person acting on their behalf.
- through well-being or similar funds.



Need more information?

If you would like further information, you can get this in several ways:

By telephone:
01707 802829

By email:
enquiries@sjog.org.uk

Via our website:

By post:
Woodhall Community Centre
Mill Green Road
Welwyn Garden City
Hertfordshire
AL7 4XD



Woodhall
Community Centre
Welwyn Garden City

More help to more people

www.sjog.uk

Community Support



Woodhall Community Centre in Welwyn Garden City provides a creative learning and well-being environment for people over 16 with additional needs.

We work creatively to provide help, support and opportunities to meet people's needs, wishes and aspirations through work-based and therapeutic activities and by delivering personalised support.



Each person who accesses the service is supported and encouraged to develop skills, with sessions being outcome-focussed and regular reviews taking place to ensure continuous development and quality of service.

We co-produce pathways to success with the people who access our service ensuring that person-centred outcomes are achieved.

Sessions cover the following areas:

- Horticulture
- Life skills
- Cooking
- Music and movement
- Sport and well-being

Training, Learning and Support

The programme has been specifically designed to promote confidence, independence, and aspirations for those most vulnerable in our community by providing training, learning and support across a range of community and social enterprise activities.

Our pathway of learning ensures the needs of each individual are catered for and allows them to develop their own skills, at their own pace, and achieve a recognised qualification.

Support Team

Training and development of the people who work for SJOG are key priorities to ensure service delivery is of the highest standard. There are values that we uphold in all that we do to make sure we treat people with Hospitality, Compassion and Respect.

Our amazing staff team is supplemented by volunteers from the local community bringing talent and life skills into the service.



Co-production is at the heart of our service and gives an organic growth to what we can deliver.



What does it cost to
run Woodhall
Community Centre?



We need to fundraise approximately **£60,000** each year to enable the activities to take place in **Woodhall Community Centre**. We are asking if you can help us, donations of any size will make a difference, for example:

£200 could support the publication and distribution of our community newsletter (designed and distributed by people with learning disabilities).

£500 could sponsor our Girls Football Group.

£1,000 could enable us to complete the raised beds in the sensory garden.

£1,500 could pay for meals for young people in our 'Peartree Pirates Club' for 1 year.

£2,600 could pay for a youth sessional worker for 1 year.

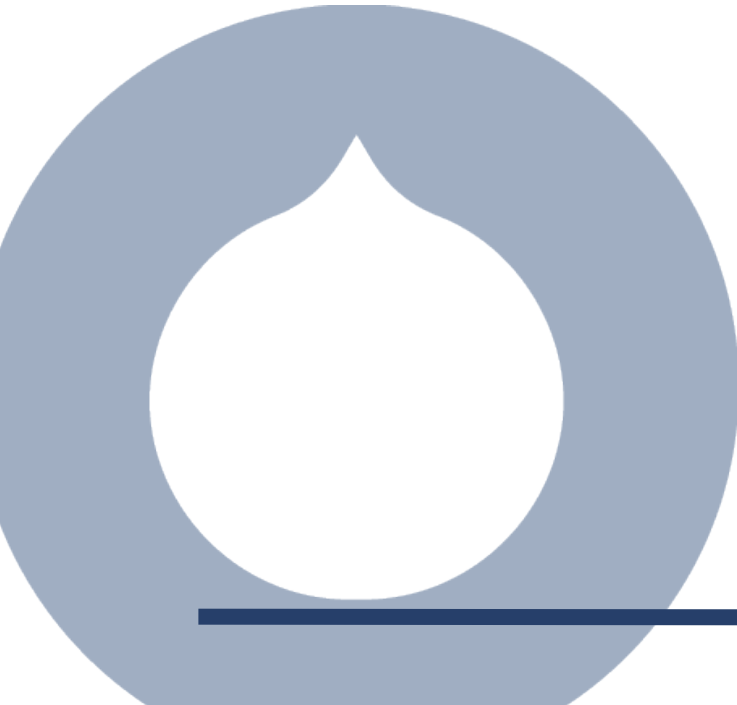
£5,000 could heat the building for the entire year.

£10,000 could pay for our full horticultural annual programme including weekly activities and plants.

£12,500 would enable us to run 'Peartree Pirates Club' (supporting 60 young people in nutritional and sports activities) for an entire year.



Partner with us



How can you help

In the summer of 2023 we had a big community event, where we consulted with the local community about what they would like to see us do more of.

There was a lot of support for more activities for people with disabilities and learning disabilities, and providing drop-in activity sessions for the wider disability community.

Top suggestions were:

- **Music club/classes**
- **Gardening club**
- **Arts and Crafts programme**
- **Cookery club**

To enable us to run a programme, we need **£10,000**. This pays for a tutor and an assistant and covers all activity costs for a whole year.

Please consider a donation or sponsorship of a programme. Full details are available from Mo or Emma.

SJOG Hospitaller Services

Hospitality

Compassion

Respect

Mo Huzair
Woodhall Manager
Woodhall Community Centre
Mill Green Road
Welwyn Garden City
Hertfordshire, AL7 3XD
T: 01707802829
E: mohuzair@sjog.org.uk
W: www.sjog.uk

Emma Frew
Fundraising and Opportunities Lead
Yarn,
Lingfield House, Lingfield Point,
Darlington,
Co Durham, DL1 1RW
T: 07951964455
E: emmafrew@sjog.org.uk
W: www.sjog.uk

For more information, please visit www.sjog.uk/woodhall

